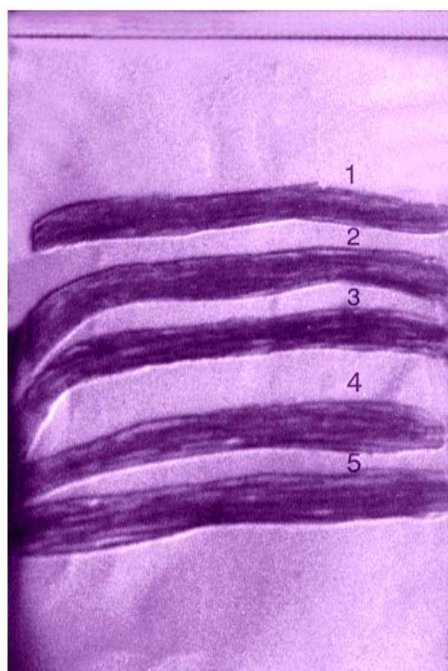


TBM Card test

Photographs for filing Patent

17.8.12



- **Figure 1** Extraction of Immunologically significant purified antigenic Glycolipids from preparative TLC plate and characterization of Eastern blot hybridization

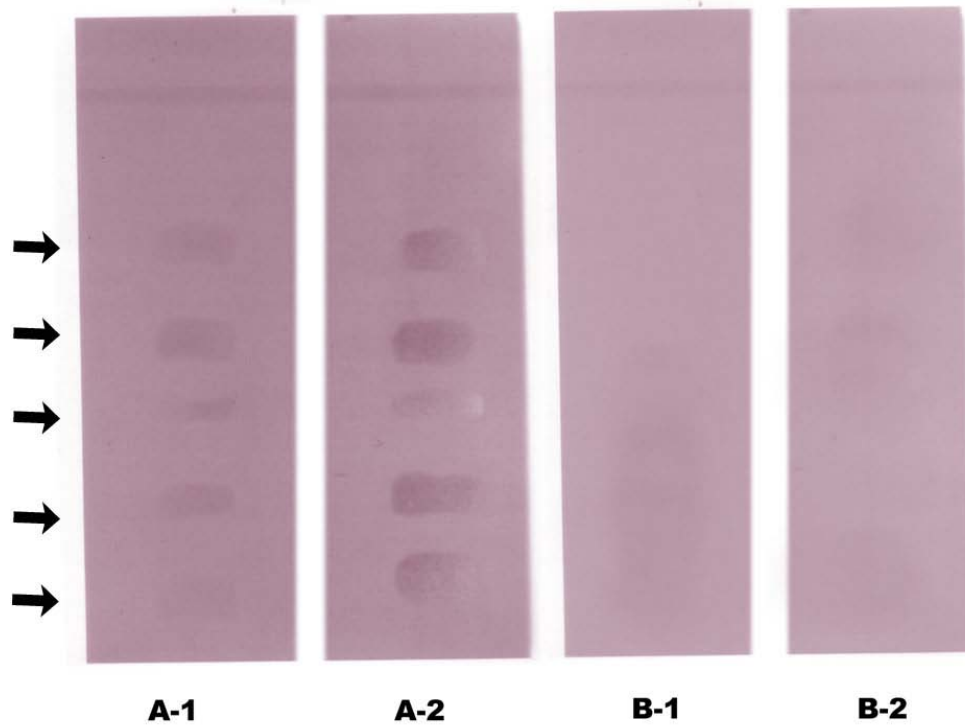
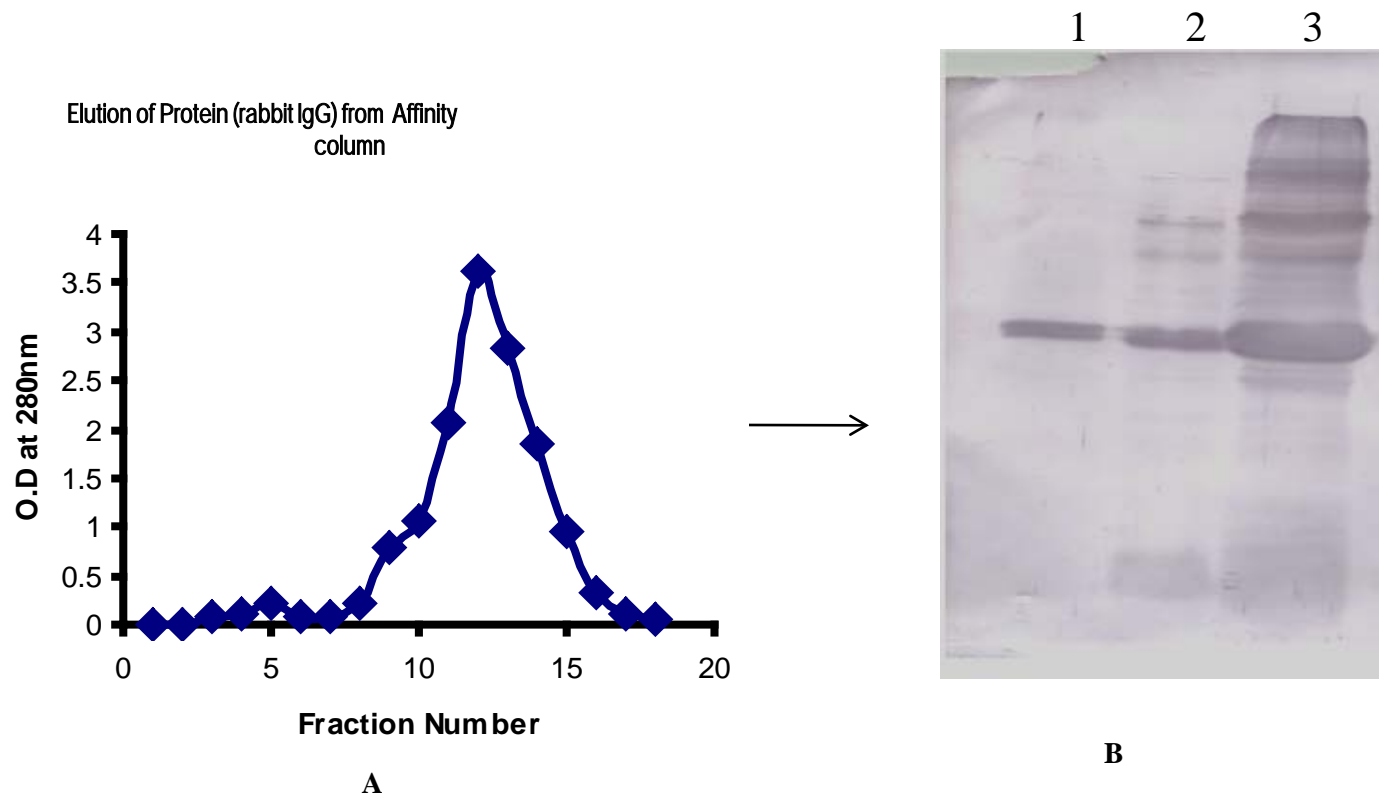


Figure 2 Eastern blot of extracted and purified glycolipid antigens of *M. tuberculosis* and their reaction with positive serum: A-1. Immunoreactivity of antiglycolipid antibodies with serologically positive sera of patients with active pulmonary TB on a TLC plate; A-2, Immunoreactivity of antiglycolipid antibodies with serologically positive sera of patients with Extra-pulmonary TB on a TLC plate; B-1, Immunoreactivity of serologically significant antigens with sera from BCG vaccinated humans for cross reactivity study on a TLC plate; B-2, Immunoreactivity of serologically significant antigens with sera from BCG unvaccinated healthy humans for cross reactivity study on a TLC plate.



- Figure 3 Purification profile of anti-glycolipid antibody -IgG
- A. Elution profile of anti glycolipid antibody (Rabbit IgG) from the affinity column chromatography.
- B. Analysis of protein by SDS PAGE (Silver staining), lane 1: purified IgG, lane 2: - partially purified fraction 3:- crude rabbit anti sera containing IgG fraction)

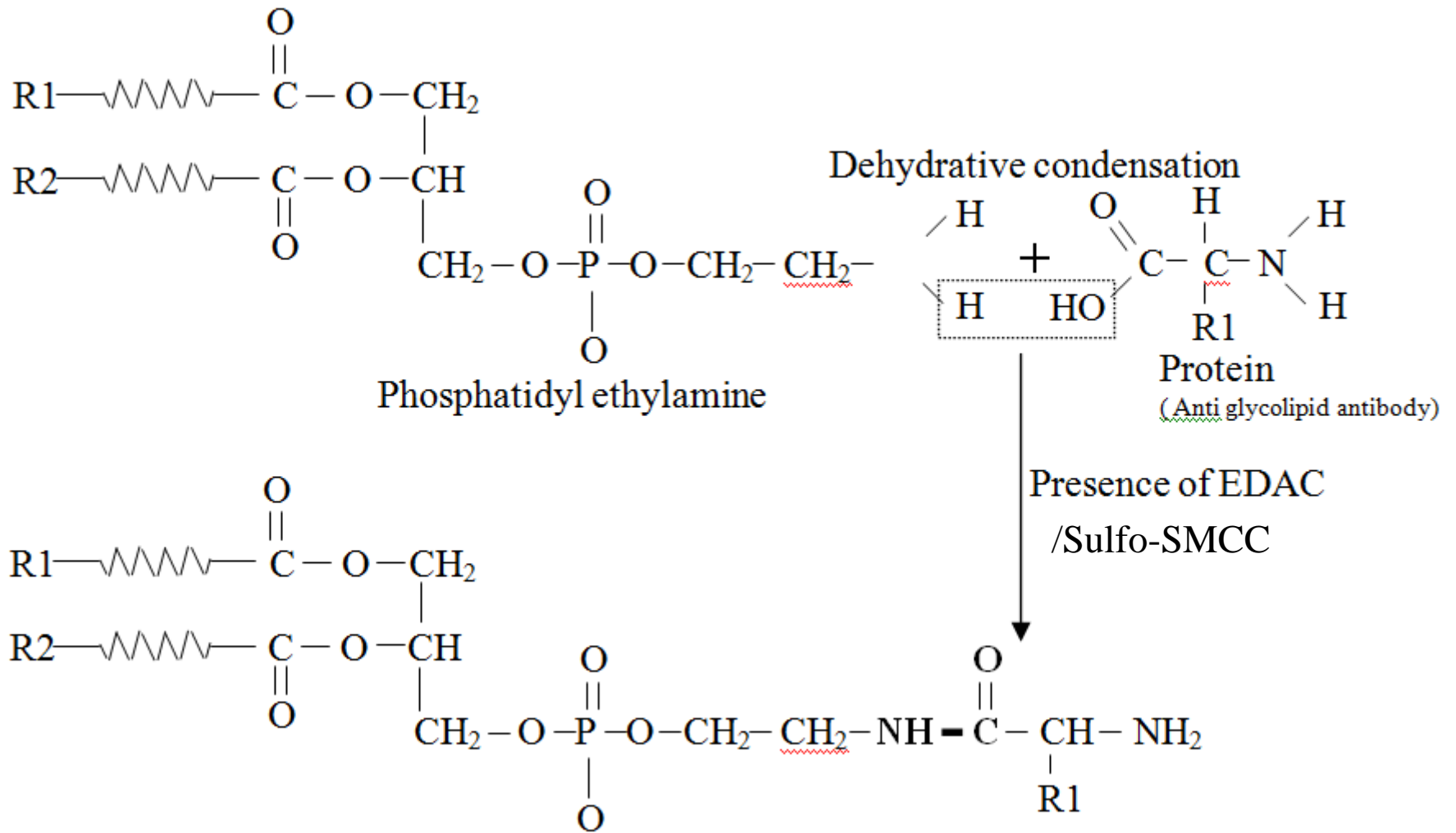
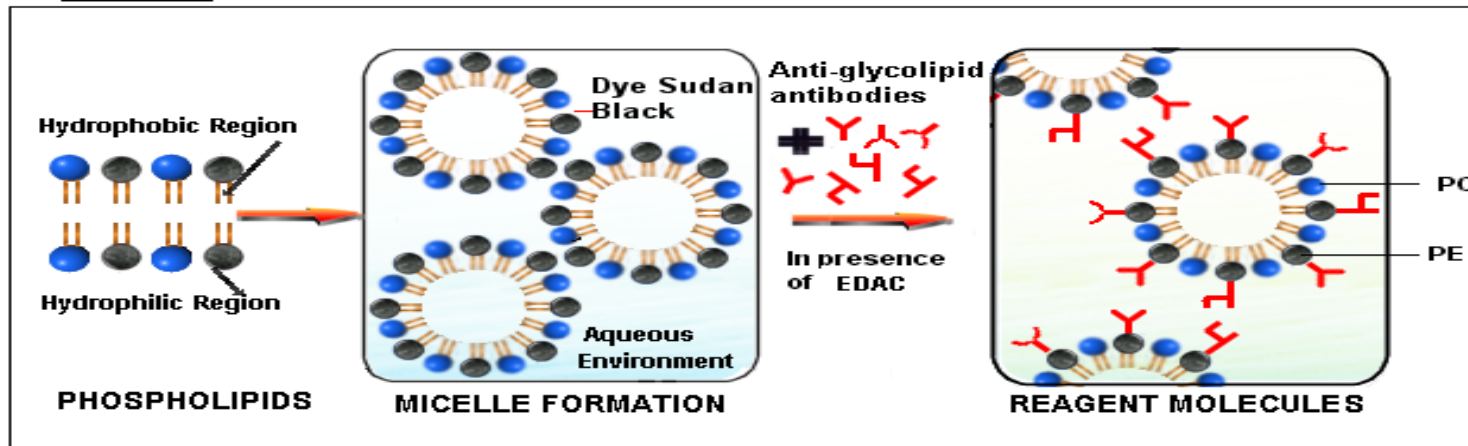


Figure 4 Reaction mechanism for coupling of protein with Phosphatidyl ethanolamine (Liposomes)

Annexure I



Annexure II

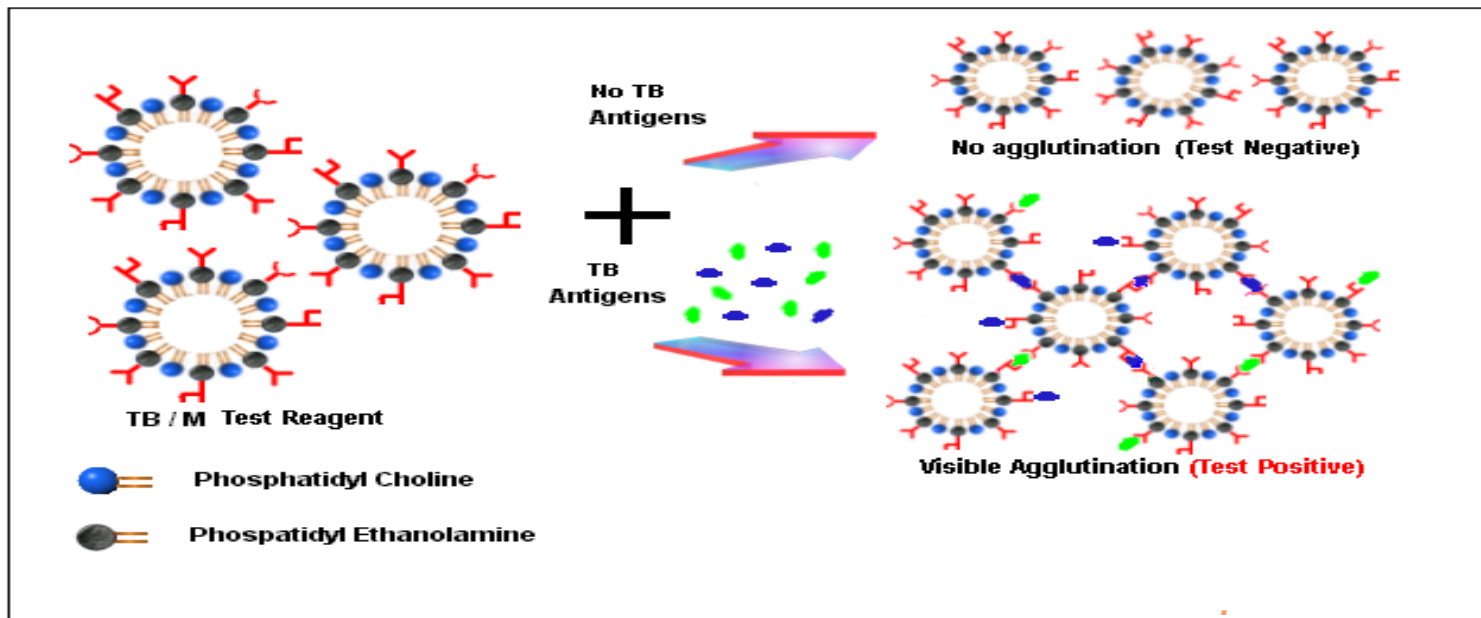


Figure 5 Principle of TB/M card test

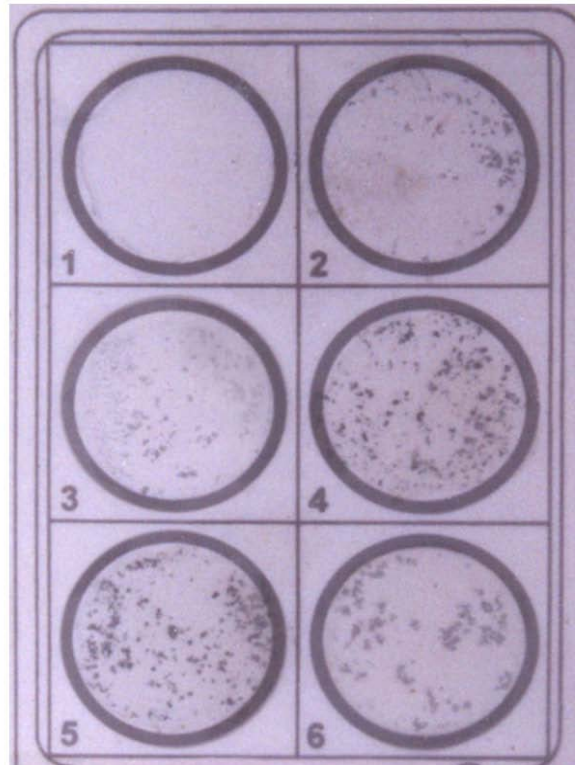


Figure 6 Agglutination reaction of Pulmonary/Extra-Pulmonary subjects with TB/M Card test results zone 1, negative control 2, positive control 3, CSF Specimens from meningial tuberculosis 4, serum sample from confirmed pulmonary TB case 5, Processed tissue biopsy specimens from abdominal tuberculosis and 6, Serum specimens from confirmed extra pulmonary TB cases

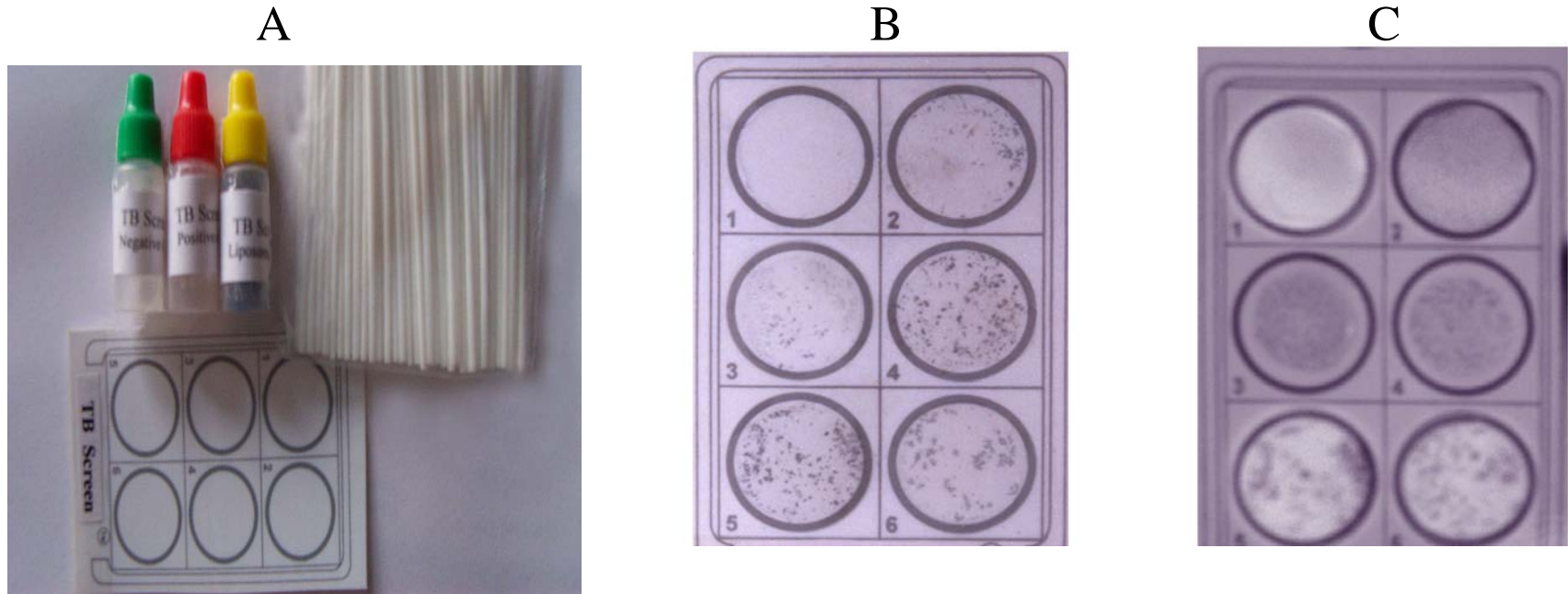


Figure 7 A. Reagents and accessories for TB/M Card test; Negative control, Positive control and liposomal antigen suspension (Bottles from left to right, respectively; test card and mixing sticks
 B. Results of TB/M Card test. Zone-1; Negative control, Zone-2; Positive control 3 and 4, serum samples from patients with confirmed cases of active TB; 5 and 6, serum samples from patients with confirmed cases of extra-pulmonary TB.
 C Results of TB/M Card test. Zone 1; Negative control; 2; serum sample with peripheral drying; 3 to 6 strengths of agglutination 1+ to 4+, respectively.